


TATA STEEL



NESTUDIO

Open doors to a whole new world
of optimized space, comfort and security

ENVISION
BETTER LIVING



With Nestudio, the newest range of Tata Steel's prefabricated modular solutions, you can now extend your living or work space with a designer structure. It ensures maximum comfort and hassle-free installation, providing exteriors and interiors with a premium finish.

Today, with space being a major constraint, there is a huge need for space utilization. Nestudio fulfills this need with exquisite and tasteful designs which are not just sturdy but stylish too.

A modern building facade featuring a mix of materials. On the left is a wall with a dark, textured stone pattern. The main wall is covered in vertical wood paneling. A white-framed window with two panes is set into the wood wall. To the right of the window is a white door with a perforated metal screen. A dark grey horizontal light fixture is mounted on the wood wall to the right of the door. The building has a dark grey roofline. In the foreground, there are green plants. The sky is clear and blue.

REDEFINING
YOUR LIFESTYLE

ABOUT **Nest-In**

Nest-In is Tata Steel's smart steel based modular construction solution. With its pan-India presence, and highly efficient delivery mechanism, Nest-In strives to provide complete turnkey solutions with a unique customer experience at its core. It is suitable for various applications like pre-fab housing, steel based modular toilets, portable cabins, security cabins, water kiosks etc.

The offerings of Nest-In are geared towards meeting existing and upcoming requirements under various government initiatives like Swacch Bharat program, Smart City initiatives and CSR initiatives of various corporates. Apart from these, Nest-In has a basket of offerings which caters to various light weight pre-fabricated construction solution requirements for projects and industries.



Why Nestudio?

- Move-in to your dream space in 4 weeks!
- Equipped with branded fittings and accessories
- Value for your money
- Low maintenance structure
- Eco-friendly and sturdy construction
- Reusable steel structure



Applications

Housing:

- Rooftop house
- Farm house
- Gym/Activity room
- Study room

Commercial:

- House office
- Conference room
- Resorts and Cottages
- Kiosks

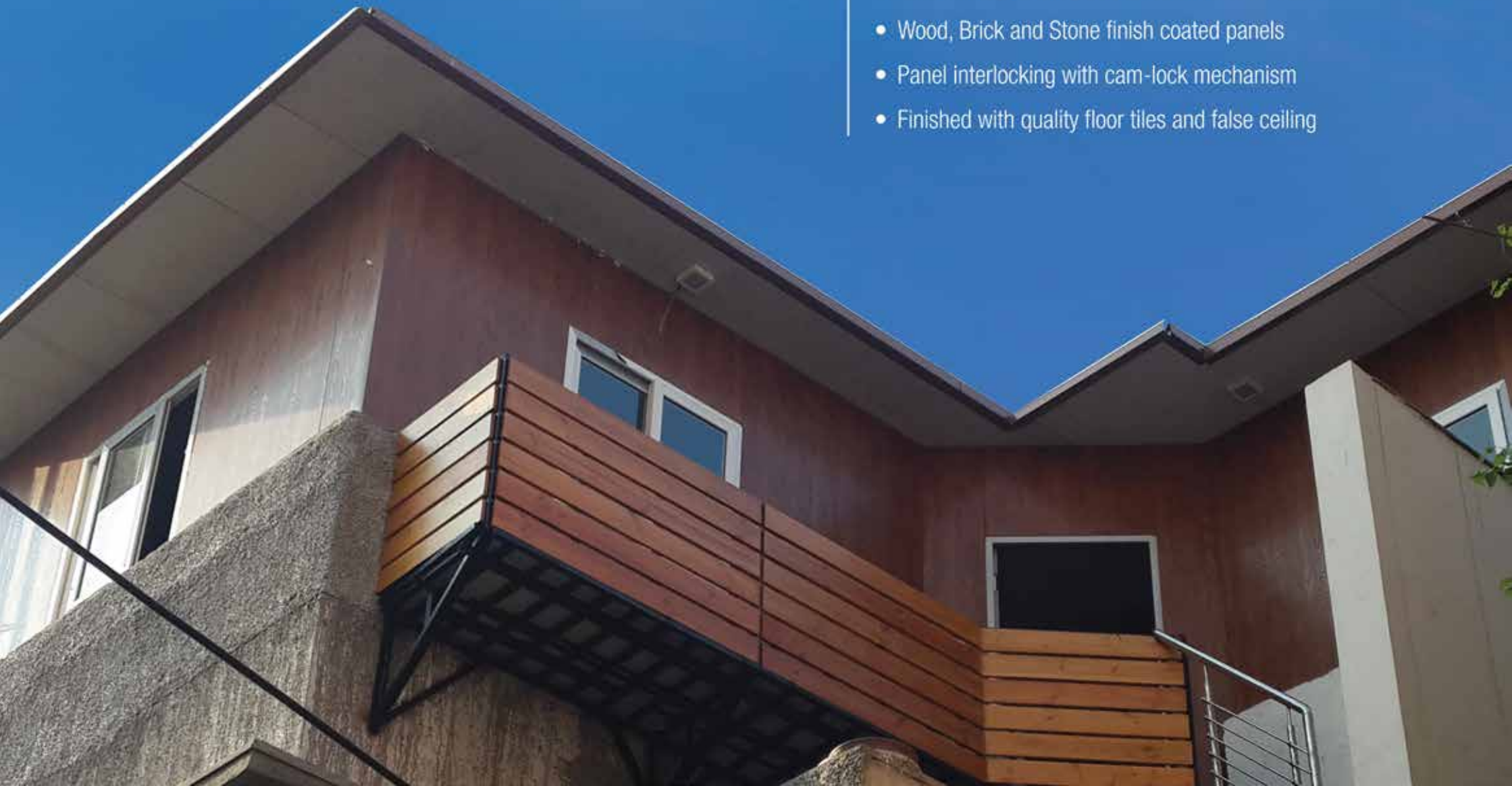


Features

- Fast and hassle free construction
- Within load bearing capacity of your existing roof
- Premium exterior and interior finish with designer finish steel
- Insulated panels for better ambient conditions
- High quality doors and windows
- Fire retardant and termite proof
- Option for air conditioning, designer lighting etc.
- One stop solution (includes Plumbing, Electrical and Civil work)

Technical Details

- 50 mm insulated PUF walls
- 40-70 mm sloped PUF roof
- 4 layer coated steel with 120 GSM galvanization
- Concealed plumbing and electrical connections
- Wood, Brick and Stone finish coated panels
- Panel interlocking with cam-lock mechanism
- Finished with quality floor tiles and false ceiling



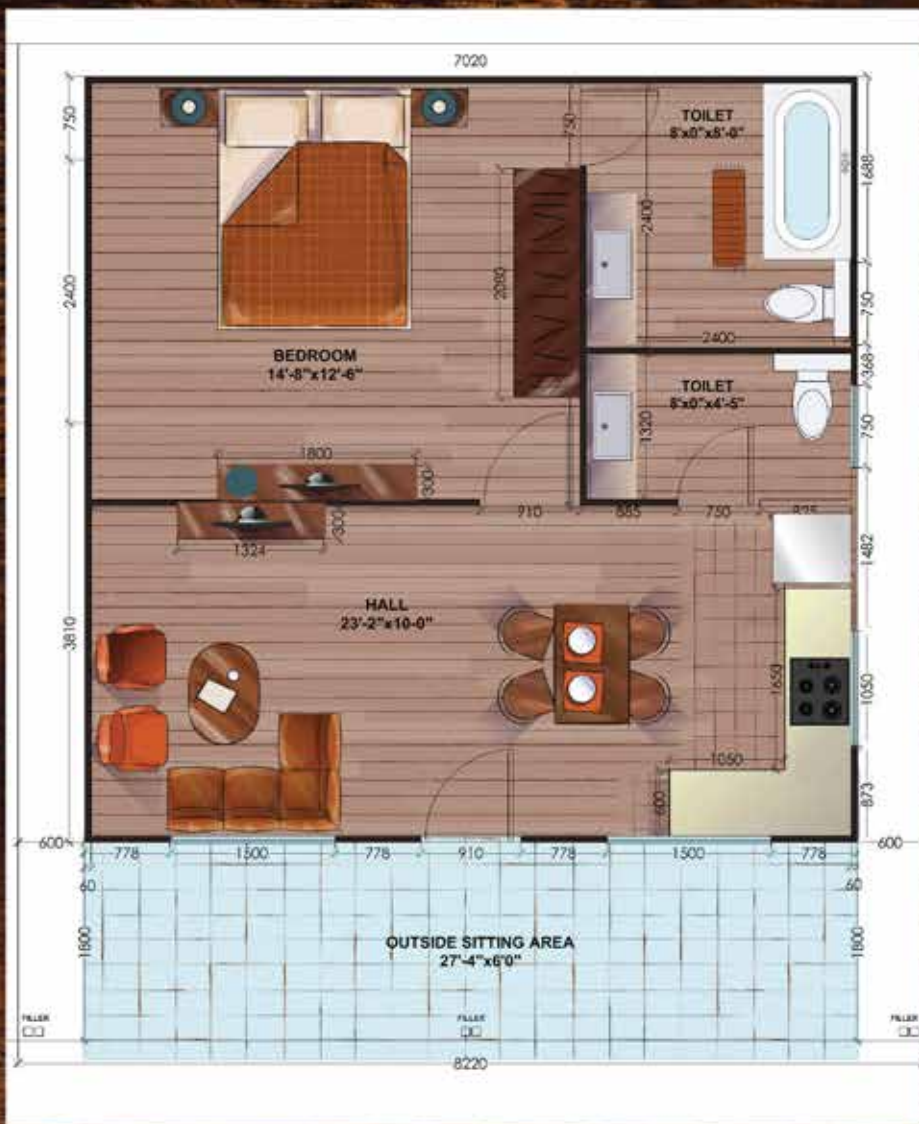
2BHK

Luxurious living spaces created with an elegant design which ingeniously combines two bedrooms, bathrooms, living-area and kitchen.



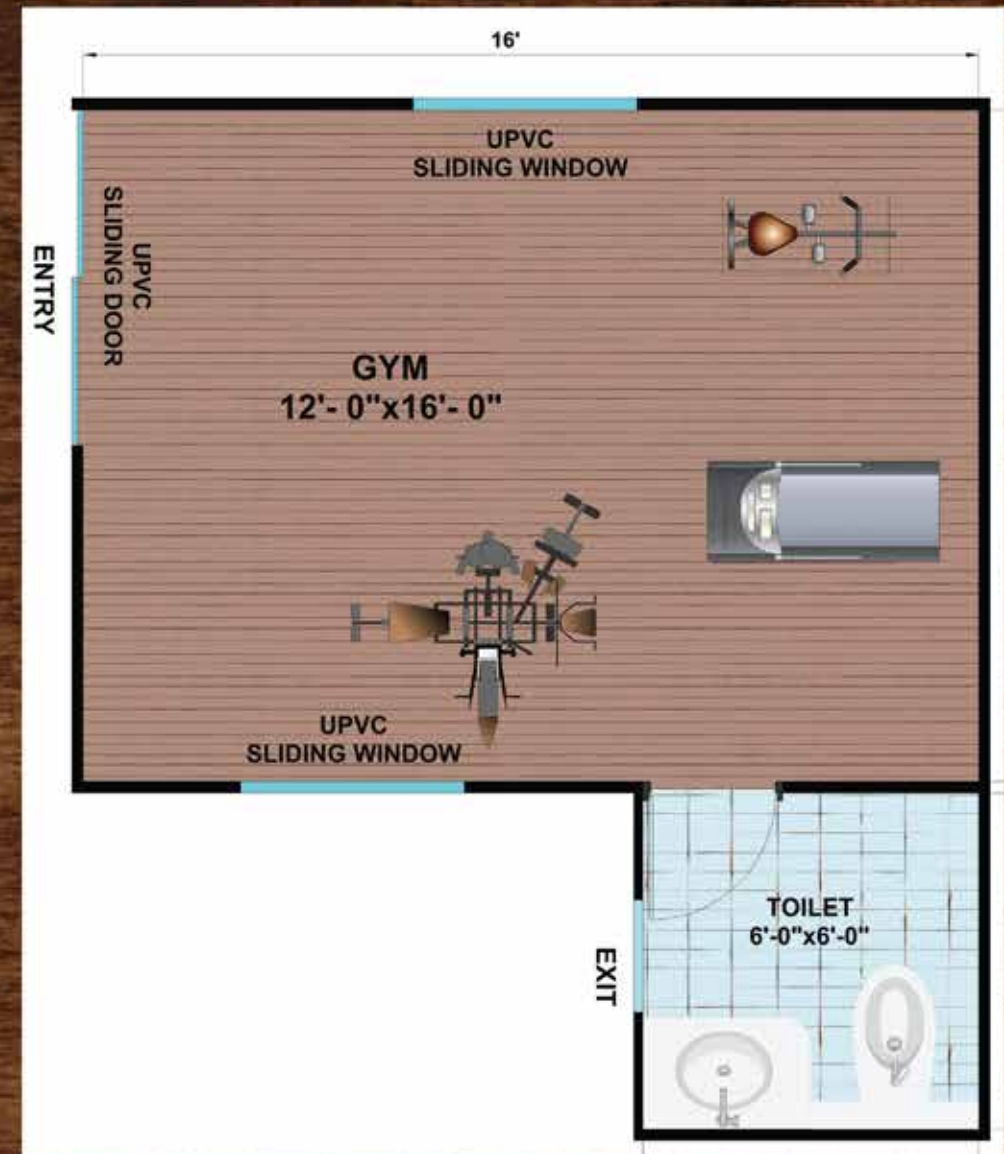
1BHK

A beautiful cottage house with a bedroom, bathroom and kitchen. Small but elegant, this is ideal for individual comfort living.



Hall with Bathroom + Gym

Customizable living spaces with a spacious hall and fully functional bathroom can be converted into customized living spaces like guest-houses, gyms, puja-rooms etc.



**YOUR OWN
DESIGNER SPACE**



Conference room



Farmhouse



1 BHK



Cottages



Study Room



15th Floor, 43, Jawaharlal Nehru Road, Kolkata - 700071
Mail at: nest-in@tatasteel.com | Visit: www.nestin.co.in
Toll free no. 1800-108-8282